

# VRprofile2: detection of antibiotic resistance-associated mobilome in bacterial pathogens

Meng Wang<sup>1</sup>, Ying-Xian Goh<sup>1</sup>, Cui Tai<sup>1</sup>, Hui Wang<sup>2</sup>, Zixin Deng<sup>1</sup> and Hong-Yu Ou<sup>1,\*</sup>

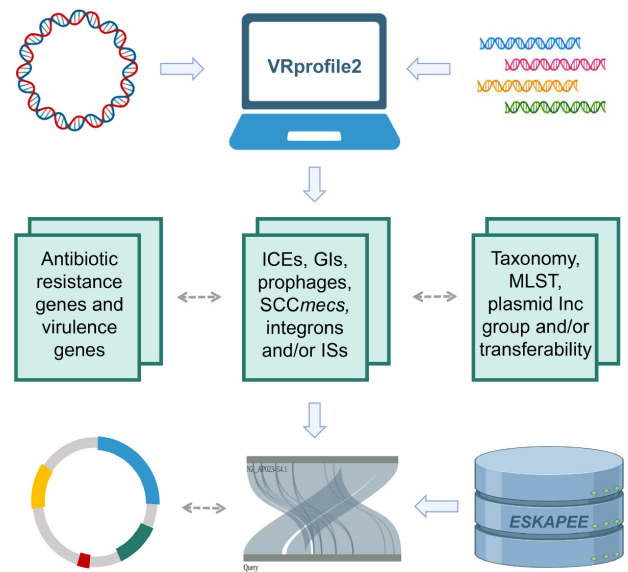
<sup>1</sup>State Key Laboratory of Microbial Metabolism, Joint International Laboratory on Metabolic & Developmental Sciences, School of Life Sciences & Biotechnology, Shanghai Jiao Tong University, Shanghai 200030, China and <sup>2</sup>State Key Laboratory of Pathogens and Biosecurity, Beijing Institute of Microbiology and Epidemiology, Beijing 100071, China

Received March 12, 2022; Revised April 10, 2022; Editorial Decision April 19, 2022; Accepted April 21, 2022

## ABSTRACT

VRprofile2 is an updated pipeline that rapidly identifies diverse mobile genetic elements in bacterial genome sequences. Compared with the previous version, three major improvements were made. First, the user-friendly visualization could aid users in investigating the antibiotic resistance gene cassettes in conjunction with various mobile elements in the multiple resistance region with mosaic structure. VRprofile2 could compare the predicted mobile elements to the collected known mobile elements with similar architecture. A new mobilome indicator was proposed to give an overall estimation of the mobilome size in individual bacterial genomes. Second, the relationship between antibiotic resistance genes, mobile elements, and host strains would be efficiently examined with the aid of predicted strain's sequence typing, the incompatibility group and the transferability of plasmids. Finally, the updated backend database, MobilomeDB2, now collected nearly a thousand active mobile elements retrieved from literature or based on prediction. The pre-computed results of the antibiotic resistance gene-carrying mobile elements of >5500 *ESKAPÉE* genomes were also provided. We expect that VRprofile2 will provide better support for researchers interested in bacterial mobile elements and the dissemination of antibiotic resistance. VRprofile2 is freely available to all users without any login requirement at <https://tool2-mml.sjtu.edu.cn/VRprofile>.

## GRAPHICAL ABSTRACT



## INTRODUCTION

The genome sequence of an individual bacterium can be divided into the chromosome backbone, common to the entire species, and a long list of the accessory regions. The latter is termed the 'mobilome' (mobile genome) (1,2), which includes a myriad of short IS elements and longer spans of episomal plasmids, transposons, integrons, gene cassettes, prophages, integrative and conjugative elements (ICEs), and genomic islands (GIs). These mobile genetic elements (MGEs) frequently carry antibiotic resistance genes (ARGs). It is a key avenue for the broad distribution of antibiotic resistance in the pathogens with clinical significance, especially for the *ESKAPÉE* bacteria (3). The *ESKAPÉE* group encompasses Gram-positive and Gram-negative species, made up of *Enterococcus faecium*, *Staphy-*

\*To whom correspondence should be addressed. Tel: +86 2162932943; Fax: +86 2162932418; Email: hyou@sjtu.edu.cn.

*lococcus aureus*, *Klebsiella pneumoniae*, *Acinetobacter baumannii*, *Pseudomonas aeruginosa*, *Enterobacter* species and *Escherichia coli*. The ARG-carrying plasmids, ICEs and other large MGEs often display a mosaic structure composed of multiple modules acquired by complex recombination, insertion, and/or reversion events (4,5). For example, a multiple resistance region contains several antibiotic resistance cassettes in conjunction with various ISs, transposons, as well as integrons and their degenerate elements (6). A recent study revealed that the interaction between the conjugative plasmids and IS elements mediated the ARG transfers (7).

There are many publicly available sources for predicting bacterial MGEs, such as the PLSDB database for plasmids (8), PHASTER tool for prophages (9), ICEberg database for ICEs (10), PAIDB database for pathogenicity islands (11), IslandViewer tool for GIs (12), TnCentral database for transposons (13) and ISfinder database for IS elements (14). They focus on the individual types of MGEs. Several prediction pipelines covering diverse MGE types were recently proposed, such as the MobileElementFinder (15) and MGEfinder (16). MobileElementFinder employs simple BLAST searches against the collected known IS, transposon, and ICE datasets. MGEfinder identifies integrative MGEs from short-read sequencing data but requires bioinformatics to operate its local version. In 2017, we developed the open-access web server VRprofile that allows rapid detection of virulence and antibiotic resistance genes and their flanking MGEs (17). It uses the homologous searches with the combination of the hit co-localization approach to detect gene clusters related to MGEs. However, these tools cannot meet the needs of visualizing and comparing the various mobile elements and their flanking ARGs. To preferably predict the transferability of putative MGEs and to investigate the transmission of antibiotic resistance and virulence factors carried by the bacterial MGEs, it is necessary to obtain the whole picture of mobilome and interpret their interactions, especially in multiple resistance regions, which have a widespread distribution in the clinical isolates of *ESKAPEE*.

Here, we report the release of VRprofile version 2.0, which offers three major enhancements: (i) graphical representation of the multiple resistance regions with mosaic structures and comparison to the known MGEs with similar architecture; (ii) aid to explore the relationships of antibiotic resistance genes, mobile elements, and host strains; (iii) pre-computed mobilome of >5500 *ESKAPEE* bacterial genomes. We expect that VRprofile2 will provide better support for researchers interested in bacterial diverse mobile elements and the dissemination of antibiotic resistance.

## MATERIALS AND METHODS

### Detection and visualization of the MGE regions

The VRprofile2 provides a rapid identification pipeline for various MGEs in the chromosomal or plasmid sequences, including the prophage, ICE, island-like region, IS element, integron and *SCCmec* (staphylococcal chromosomal cassettes *mec*) (Supplementary Figure S1). Compared to the original version, the update pipeline newly inte-

grated the following modules: the prediction of integron using IntegronFinder (18), the detection of *SCCmec* using *SCCmecFinder* (19), and the BLASTp searches of the transposase (TnpA) and resolvase (TnpR) for the transposons retrieved from the TnCentral (13) and TnRegistry (20) databases. The cluster of ISs/transposons (15) and the flanking ARGs were also detected with an interval <5 kb, which is often present in the multiple resistance region with the complex mosaic structure in a resistance plasmid (7,13,21).

As shown in Supplementary Figure S1, VRprofile2 has different preprocessing modules for the different uploaded sequences. (i) For the chromosomal sequence, the strain typing is done using the script *mlst* (<https://github.com/tseemann/mlst>) that employs the PubMLST typing schemes (22). (ii) For the plasmid genome sequence, the plasmid incompatibility group is classified using the tool *ABRicate* (<https://github.com/tseemann/abricate>) with an inbuilt database of *PlasmidFinder* (23). The transferability of the plasmid is predicted as conjugative or mobilizable by using the tool *oriTfinder* (24). (iii) For the assembled contigs of a bacterial genome or the metagenomic contigs assembled from long reads, the tool *viralVerify* was integrated into the VRprofile2 pipeline to classify contigs as the fragments of chromosome or plasmid (25). *Kraken2* was also employed to determine the taxonomic classification of metagenomic contigs (26).

The VRprofile2 output web page dynamically presents the chromosome or plasmid map with the aid of the AngularPlasmid HTML markup (<http://angularplasmid.vixis.com/>). And then, an expanded view of the identified MGE region was visualized using *SVGene* (<https://github.com/kblin/svgene>), a software that enables in-browser SVG drawings from gene cluster data. These interactive presentations allow the users to conveniently check the genomic coordinates and features of the identified MGE regions and their harboring or flanking ARGs.

### Estimation of the mobilome size

To provide an overview of the mobilome of individual strains, we proposed a new indicator, *mV* (mobilome value), which is estimated by dividing the mobilome size by its whole genome size. The mobilome size is the sum of MGE lengths identified by VRprofile2, irrespective of their types. There are two points to be considered in the *mV* estimation: (i) for two completely overlapping MGE regions, the length of the larger one is counted while that of the smaller one is omitted. (ii) for two partially overlapping MGE regions, the length of the merged region is counted. In addition, another value, *mAV*, is employed to examine the mobile elements that harbor ARGs or the ISs/transposons flanked by ARGs with an interval <5 kb. It is calculated by dividing the size of the ARG-associated mobilome by its whole genome size.

### Mobilome of *ESKAPEE* bacteria

The VRprofile2 web server provided the pre-calculated results of the mobilome of the sequenced *ESKAPEE* bacterial

genome. A total of 5,536 completely sequenced genomes of *ESKAPEE* bacteria were retrieved from GenBank in October 2021, including 235 *E. faecium*, 1002 *S. aureus*, 1063 *K. pneumoniae*, 300 *A. baumannii*, 359 *P. aeruginosa*, 207 *Enterobacter* spp. and 2370 *E. coli*. The pre-calculated results were listed and visualized on the web pages ‘Browse’, ‘Search’ and ‘Statistics’. On the ‘Browse’ web page, the users can fetch the strain information and the details of identified MGEs. On the ‘Search’ web page, by entering an ARG name, the distribution of the queried ARG in the MGEs of host bacteria can be retrieved (Supplementary Figure S2).

A total of 294 461 MGEs of *ESKAPEE* were detected, of which 15 650 carry ARGs (Supplementary Table S1). The sequences of these ARG-carrying MGEs were pairwise aligned using Mash (27) and then grouped using NetworkX with the Mash distances <0.005 (28). The distribution of these obtained ARG-carrying MGE groups among *ESKAPEE* was examined, and 106 groups were widespread among different MLST of the individual species. These groups were thus labeled as ‘active’.

### MobilomeDB2, a collection of active ARG-associated MGEs

The back-end database MobilomeDB2 newly added three datasets related to the active MGEs that are prone to transfer ARGs (Supplementary Table S2). The first dataset, Dataset I, consists of 586 transferable MGEs with experimental supports. It contains 165 conjugative plasmids, 180 ICEs and 241 transposons collected from the literature retrieved from PubMed. The second dataset, Dataset II, was taken from the VRprofile2-predicted active *ESKAPEE*'s MGEs as defined above. In addition, the third dataset, Dataset III, which contains the publicly available MGE resources, was also integrated into MobilomeDB (Supplementary Table S2). A total of 34 513 plasmids, 65 668 prophage fragments, 1329 pathogenicity islands (PAIs)/antimicrobial resistance islands (REIs), 552 ICEs, and 407 transposons were retrieved from PLSDB, PHASTER, PAIDB, ICEberg, and TnRegistry, respectively. By integrating Mash (27), VRprofile2 can subsequently examine the conserved or rearranged architecture of the predicted MGE regions by comparing them to the MobilomeDB2 datasets.

### Implementation of the VRprofile2 server

The VRprofile2 web server is applied to a wide range of bacterial chromosomal and plasmid sequences. It allows users to upload a nucleotide sequence file (in FASTA or GenBank format) containing the completely or partially sequenced bacterial genome or the multiple contigs assembled from the single genome or metagenomic long-read sequencing data. In general, a job can be completed within a minute for a 100-kb plasmid genome sequence or 10 min for a 5-Mb chromosomal sequence. The VRprofile2 server was developed using Python and PHP on a CentOS Linux platform with an Apache Web server. Also, HTML with CSS and bootstrap (<http://getbootstrap.com/>) were used to generate the web pages. JavaScript and jQuery were used to encounter the dynamic behavior of HTML. Google Chrome is the recommended browser for VRprofile2 for a better user experience.

## RESULTS AND DISCUSSION

### Case Study 1: detection and comparison of a multiple resistance region in the resistance plasmid

VRprofile2 provides a flexible and biologist-friendly web interface consisting of an input page and a result page. In the example shown in Figure 1, the genome sequence of an *E. coli* M505 plasmid pM505-NDM5 was uploaded with the file in FASTA format (GenBank accession number: AP023220.2) (29). The result page listed the prediction of the incompatibility group (IncFII) and transferability (conjugative) of pM505-NDM5 (Figure 1A). The identified MGE regions were listed and could also be downloaded as an individual text file, while the MGE regions carrying ARGs were highlighted in the table (Figure 1B). Notably, the result page also offered the functional tabs for visualization and further analysis of the AGR-associated MGEs (Figure 1C and D). A carbapenemase gene *NDM-5* and eight other ARGs were clustered in a 27-kb region (MGE1 region in Figure 1C), carrying four IS26 elements. Interestingly, an integron that contained three resistance gene cassettes (MGE2 regions in Figure 1C) was located within this multiple resistance region.

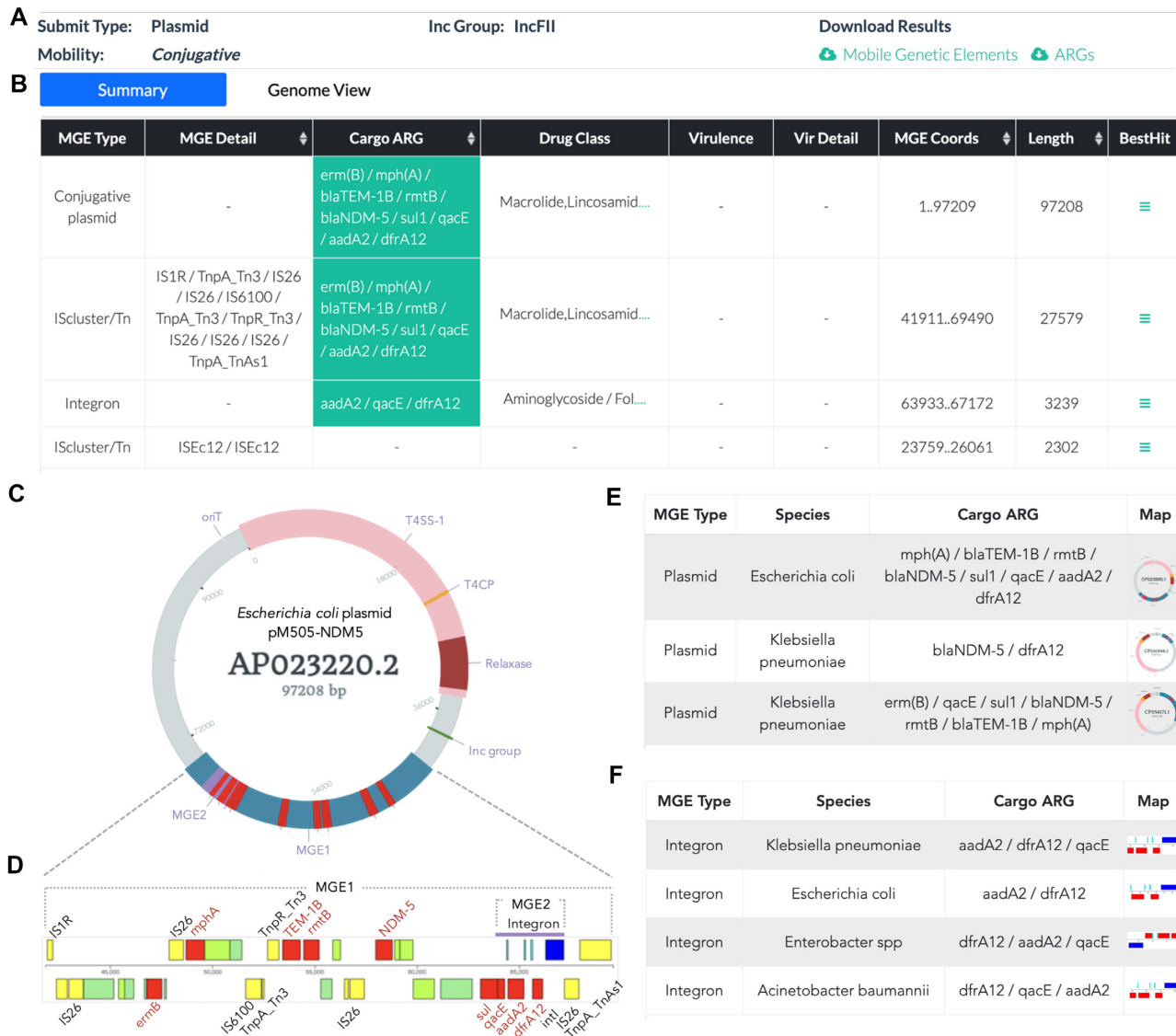
In addition, the VRprofile2-identified MGE regions can be compared to the known MGEs with similar architecture by using Mash. MobilomeDB2 Database II contains 106 active ARG-associated MGE groups taken from *ESKAPEE*. Using the whole plasmid pM505-NDM5 as the query to search against Database II, it showed that the skeleton of pM505-NDM5 was highly similar to an active ARG-associated MGE group, which consists of 14 plasmids of similar structure but carrying different ARGs in *E. coli* and *K. pneumoniae* (Figure 1E). Remarkably, there was no match for the MGE1 region (an IS and ARG cluster) but massive hits for the MGE2 region (an integron with resistance cassettes) (Figure 1F), indicating that the *NDM-5*-carrying resistance region in pM505-NDM5 exhibited a unique combination, *i.e.*, a conserved integron located within a new cluster of ISSs.

Three other examples with the input of *E. coli* chromosomal genome sequence, *K. pneumoniae* plasmid genome sequence (30), and the MinION sequencing metagenomic contigs (31) are available in Supplementary Figures S3, S4 and S5, respectively.

### Case Study 2: examination of the relationship between ARGs, plasmids and host strains

VRprofile2 can facilitate an in-depth analysis of the relationships between the host strains with diverse MLSTs, different mobile elements, and various ARGs. The ‘Statistics’ web page of the VRprofile2 web server provides the estimated mobilome sizes of >5500 *ESKAPEE* bacterial genomes (Figure 2A). The *mV* values of these *ESKAPEE* bacteria ranged from 0.01 to 0.36, while the values vary across different species and even within a species.

There are 3525 plasmids in 1063 *K. pneumoniae* genomes, representing about 30% of the total mobilome in an individual strain (Figure 2B and Supplementary Figure S6). The relationships between ARGs, plasmids, and host strains are graphically shown in Figure 2C and Supplementary Figure



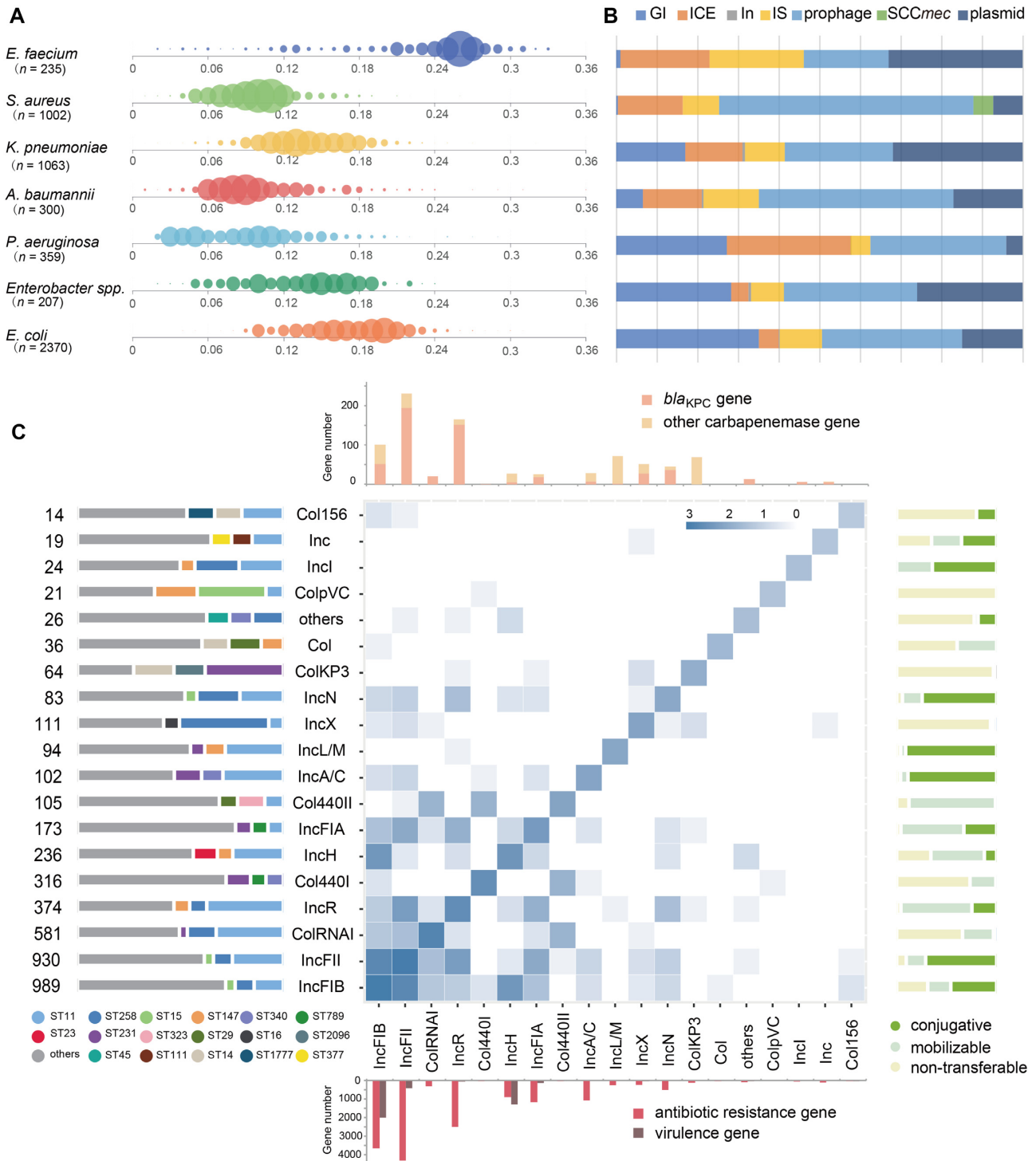
**Figure 1.** An overview of VRprofile2 outputs using the *E. coli* M505 plasmid pM505-NDM52 as an example. (A) The predicted incompatibility group and transferability of pM505-NDM5. (B) A table of the identified MGE regions. (C) A circular representation of pM505-NDM52 showing the locations of the identified MGE1 and MGE2 regions (filled with blue) and ARGs (highlighted in red). Four modules related to plasmid conjugation are also marked, including an origin region of transfer (*oriT*), relaxase gene, type IV coupling protein (*T4CP*) gene and gene cluster for the type IV secretion system (*T4SS*) apparatus. (D) An expanded view of the MGE1 region contains four *IS26* elements, one integron (*MGE2* region), and nine ARGs. (E) A table containing the Mash-facilitated sequence comparison of pM505-NDM52 against the MobilomeDB Dataset II, which contained the active ARG-associated MGE groups of *ESKAPEE* bacteria. (F) A table containing the sequence comparison of the *MGE2* region against the Dataset II.

S7 and Table S3. For example, out of all the 3525 plasmids under analysis, 314 plasmids carried 326 *bla*<sub>KPC</sub> genes. Notably, 190 *bla*<sub>KPC</sub> genes were harbored in 182 IncFII-related plasmids, including 64.3% (117/182) IncFII plasmids in the ST11 strains and 11.5% (21/182) in the ST258 strains.

## CONCLUSION

Here, we reported a major update of VRprofile and focused on ARG-carrying mobilome, especially in the *ESKAPEE* bacteria. The rapid detection, user-friendly visualization and comparison could aid users in investigating the multiple resistance regions and other mosaic regions.

With the prediction of the strain MLST, plasmid incompatibility group, and transferability, VRprofile2 could facilitate examining the relationships between ARGs, MGEs and host strains. The newly proposed indicator *mV* also gives an overall estimation of the mobilome size in an individual bacterial genome. The pre-computed results of the mobilome of >5500 *ESKAPEE* bacterial genomes are provided. They will be updated and improved regularly from the rapidly growing bacterial genomic data. Ultimately, we propose an updated mobilome detection pipeline to efficiently explore large numbers of mobile elements that play key roles in the rapid dissemination of antibiotic resistance.



**Figure 2.** VR profile2-estimated size of the mobilome borne by individual strains of the *ESKAPEE* group. (A) Bubble chart of the estimated mobilome size. The complete genome sequences of 5,536 *ESKAPEE* bacteria were retrieved from GenBank. The abscissa axis represents the *mV* value of individual strains, calculated by dividing the mobilome size by its whole genome size. The bubble size represents the magnitude of the individual strains under analysis. (B) The distribution of MGE types includes the GI, ICE, integron (In), IS, prophage, *SCCmec* and plasmid. (C) The relationship between the strains (*n* = 1063), plasmids (*n* = 3525), and plasmid-carrying ARGs (*n* = 8924) of *Klebsiella pneumoniae*. The heatmap presents the profile of the plasmids belonging to different incompatibility groups (Inc). The number (log value) of all the identified Inc groups in the single- or multiple-replicon plasmids (Supplementary Table S3) is plotted alongside the map diagonal. The number of the Inc pairs in the individual multiple-replicon plasmids is depicted in the cell. The left bar chart indicates the plasmid number and the proportion in different sequence typing (MLST) strains. For the plasmid containing two replicon regions, the plasmid number of each Inc group was counted separately. The right bar chart denotes the plasmid transferability. The top bar chart presents the number of *bla*<sub>KPC</sub> and other carbapenemase genes (see Supplementary Figure S7 for details). The down bar chart shows the number of ARGs and virulence genes.

## SUPPLEMENTARY DATA

Supplementary Data are available at NAR Online.

## ACKNOWLEDGEMENTS

The graphical abstract was created with BioRender (BioRender.com).

## FUNDING

National Key Research and Development Program of China [2018YFE0102400]; National Natural Science Foundation of China [32070572]; Science and Technology Commission of Shanghai Municipality [19JC1413000 and 19430750600]; Medicine and Engineering Interdisciplinary Research Fund of Shanghai Jiao Tong University [19x190020171]. Funding for open access charge: National Key Research and Development Program of China [2018YFE0102400].

*Conflict of interest statement.* None declared.

## REFERENCES

- Ou, H.-Y., Smith, R., Lucchini, S., Hinton, J., Chaudhuri, R.R., Pallen, M., Barer, M.R. and Rajakumar, K. (2005) ArrayOme: a program for estimating the sizes of microarray-visualized bacterial genomes. *Nucleic Acids Res.*, **33**, e3.
- Shao, Y., He, X., Harrison, E.M., Tai, C., Ou, H.-Y., Rajakumar, K. and Deng, Z. (2010) mGenomeSubtractor: a web-based tool for parallel *in silico* subtractive hybridization analysis of multiple bacterial genomes. *Nucleic Acids Res.*, **38**, W194–W200.
- Partridge, S.R., Kwong, S.M., Firth, N. and Jensen, S.O. (2018) Mobile genetic elements associated with antimicrobial resistance. *Clin. Microbiol. Rev.*, **31**, e0008817.
- Dionisio, F., Zilhão, R. and Gama, J.A. (2019) Interactions between plasmids and other mobile genetic elements affect their transmission and persistence. *Plasmid*, **102**, 29–36.
- Deng, Y., Bao, X., Ji, L., Chen, L., Liu, J., Miao, J., Chen, D., Bian, H., Li, Y. and Yu, G. (2015) Resistance integrons: class 1, 2 and 3 integrons. *Ann. Microbiol. Antimicrob.*, **14**, 45.
- Harmer, C.J., Partridge, S.R. and Hall, R.M. (2016) pDGO100, a type 1 IncC plasmid from 1981 carrying ARI-A and a Tn1696-like transposon in a novel integrating element. *Plasmid*, **86**, 38–45.
- Che, Y., Yang, Y., Xu, X., Brinda, K., Polz, M.F., Hanage, W.P. and Zhang, T. (2021) Conjugative plasmids interact with insertion sequences to shape the horizontal transfer of antimicrobial resistance genes. *Proc. Natl. Acad. Sci. U.S.A.*, **118**, e2008731118.
- Schmartz, G.P., Hartung, A., Hirsch, P., Kern, F., Fehlmann, T., Müller, R. and Keller, A. (2022) PLSDB: advancing a comprehensive database of bacterial plasmids. *Nucleic Acids Res.*, **50**, D273–D278.
- Arndt, D., Grant, J.R., Marcu, A., Sajed, T., Pon, A., Liang, Y. and Wishart, D.S. (2016) PHASTER: a better, faster version of the PHAST phage search tool. *Nucleic Acids Res.*, **44**, W16–W21.
- Liu, M., Li, X., Xie, Y., Bi, D., Sun, J., Li, J., Tai, C., Deng, Z. and Ou, H.-Y. (2019) ICEberg 2.0: an updated database of bacterial integrative and conjugative elements. *Nucleic Acids Res.*, **47**, D660–D665.
- Yoon, S.H., Park, Y.-K. and Kim, J.F. (2015) PAIDB v2.0: exploration and analysis of pathogenicity and resistance islands. *Nucleic Acids Res.*, **43**, D624–D630.
- Bertelli, C., Laird, M.R., Williams, K.P. and Simon Fraser University Research Computing Group/Simon Fraser University Research Computing Group, Lau, B.Y., Hoad, G., Winsor, G.L. and Brinkman, F.S.L. (2017) IslandViewer 4: expanded prediction of genomic islands for larger-scale datasets. *Nucleic Acids Res.*, **45**, W30–W35.
- Ross, K., Varani, A.M., Snesrud, E., Huang, H., Alvarenga, D.O., Zhang, J., Wu, C., McGann, P. and Chandler, M. (2021) TnCentral: a prokaryotic transposable element database and web portal for transposon analysis. *mBio*, **12**, e0206021.
- Siguier, P., Perochon, J., Lestrade, L., Mahillon, J. and Chandler, M. (2006) ISfinder: the reference centre for bacterial insertion sequences. *Nucleic Acids Res.*, **34**, D32–D36.
- Johansson, M.H.K., Bortolaia, V., Tansirichaiya, S., Aarestrup, F.M., Roberts, A.P. and Petersen, T.N. (2021) Detection of mobile genetic elements associated with antibiotic resistance in *Salmonella enterica* using a newly developed web tool: MobileElementFinder. *J. Antimicrob. Chemother.*, **76**, 101–109.
- Durrant, M.G., Li, M.M., Siranosian, B.A., Montgomery, S.B. and Bhatt, A.S. (2020) A bioinformatic analysis of integrative mobile genetic elements highlights their role in bacterial adaptation. *Cell Host & Microbe*, **27**, 140–153.
- Li, J., Tai, C., Deng, Z., Zhong, W., He, Y. and Ou, H.-Y. (2018) VRprofile: gene-cluster-detection-based profiling of virulence and antibiotic resistance traits encoded within genome sequences of pathogenic bacteria. *Brief. Bioinform.*, **19**, 566–574.
- Cury, J., Jové, T., Touchon, M., Néron, B. and Rocha, E.P. (2016) Identification and analysis of integrons and cassette arrays in bacterial genomes. *Nucleic Acids Res.*, **44**, 4539–4550.
- Kaya, H., Hasman, H., Larsen, J., Stegger, M., Johannesen, T.B., Allesøe, R.L., Lemvig, C.K., Aarestrup, F.M., Lund, O. and Larsen, A.R. (2018) SCCmecFinder, a web-based tool for typing of staphylococcal cassette chromosome *mec* in *Staphylococcus aureus* using whole-genome sequence data. *mSphere*, **3**, e0061217.
- Tansirichaiya, S., Rahman, M.A. and Roberts, A.P. (2019) The transposon registry. *Mob. DNA*, **10**, 40.
- Ellabaan, M.M.H., Munck, C., Porse, A., Imamovic, L. and Sommer, M.O.A. (2021) Forecasting the dissemination of antibiotic resistance genes across bacterial genomes. *Nat. Commun.*, **12**, 2435.
- Jolley, K.A., Bray, J.E. and Maiden, M.C.J. (2018) Open-access bacterial population genomics: BIGSdb software, the pubmlst.org website and their applications. *Wellcome Open Res.*, **3**, 124.
- Carattoli, A., Zankari, E., García-Fernández, A., Voldby Larsen, M., Lund, O., Villa, L., Møller Aarestrup, F. and Hasman, H. (2014) *In silico* detection and typing of plasmids using plasmidfinder and plasmid multilocus sequence typing. *Antimicrob. Agents Chemother.*, **58**, 3895–3903.
- Li, X., Xie, Y., Liu, M., Tai, C., Sun, J., Deng, Z. and Ou, H.-Y. (2018) oriTfinder: a web-based tool for the identification of origin of transfers in DNA sequences of bacterial mobile genetic elements. *Nucleic Acids Res.*, **46**, W229–W234.
- Antipov, D., Raiko, M., Lapidus, A. and Pevzner, P.A. (2020) Metaviral SPAdes: assembly of viruses from metagenomic data. *Bioinformatics*, **36**, 4126–4129.
- Wood, D.E., Lu, J. and Langmead, B. (2019) Improved metagenomic analysis with Kraken 2. *Genome Biol.*, **20**, 257.
- Ondov, B.D., Treangen, T.J., Melsted, P., Mallonee, A.B., Bergman, N.H., Koren, S. and Phillippy, A.M. (2016) Mash: fast genome and metagenome distance estimation using minhash. *Genome Biol.*, **17**, 132.
- Matlock, W., Chau, K.K., AbuOun, M., Stubberfield, E., Barker, L., Kavanagh, J., Pickford, H., Gilson, D., Smith, R.P., Gweon, H.S. *et al.* (2021) Genomic network analysis of environmental and livestock F-type plasmid populations. *ISME J.*, **15**, 2322–2335.
- Sugawara, Y., Akeda, Y., Hagiya, H., Sakamoto, N., Takeuchi, D., Shanmugakani, R.K., Motooka, D., Nishi, I., Zin, K.N., Aye, M.M. *et al.* (2019) Spreading patterns of NDM-producing *Enterobacteriaceae* in clinical and environmental settings in Yangon, Myanmar. *Antimicrob. Agents Chemother.*, **63**, e01924-18.
- Harmer, C.J., Partridge, S.R. and Hall, R.M. (2016) pDGO100, a type 1 IncC plasmid from 1981 carrying ARI-A and a Tn1696-like transposon in a novel integrating element. *Plasmid*, **86**, 38–45.
- Bertrand, D., Shaw, J., Kalathiyappan, M., Ng, A.H.Q., Kumar, M.S., Li, C., Dvornic, M., Soldo, J.P., Koh, J.Y., Tong, C. *et al.* (2019) Hybrid metagenomic assembly enables high-resolution analysis of resistance determinants and mobile elements in human microbiomes. *Nat. Biotechnol.*, **37**, 937–944.

## **VRprofile2: detection of antibiotic resistance-associated mobilome in bacterial pathogens**

### **SUPPLEMENTARY DATA**

**Table S1.** VRprofile2-predicted MGEs in the complete genome sequences of *ESKAPEE* bacteria.

**Table S2.** Three MGE datasets of MobilomeDB2.

**Table S3.** VRprofile2-predicted antibiotic resistance genes (ARGs) in the 3525 plasmids of 1063 completely sequenced *K. pneumoniae* strains.

**Figure S1.** Schematic representation of the VRprofile2 pipeline to identify and display antibiotic resistance-related mobile genetic elements in the bacterial genome sequences of bacterial pathogens.

**Figure S2.** An overview of the 'Search' web page for the query of carbapenemase gene *KPC-2*.

**Figure S3.** An overview of VRprofile2 outputs using the *E. coli* M505 chromosome as an example.

**Figure S4.** An overview of VRprofile2 outputs using the *K. pneumoniae* plasmid pKPC\_CAV1344 as an example of the VRprofile2-detected multidrug resistance region.

**Figure S5.** An overview of VRprofile2 outputs using an example of the metagenomic contigs assembled from long-read sequencing data.

**Figure S6.** VRprofile2-predicted ARGs and plasmid transferability with the input of plasmid genome sequences.

**Figure S7.** The relationship of the *bla*<sub>KPC</sub> genes, plasmids, and strains of *K. pneumoniae*.

**Table S1.** VRprofile2-predicted MGEs in the complete genome sequences of *ESKAPEE* bacteria <sup>a</sup>.

Species	Genome Number <sup>b</sup>	Genomic island	ICE	Prophage	SCC <i>mec</i>	Integron	IS cluster <sup>c</sup>	Plasmid
<i>E. faecium</i>	235	76 [4]	782 [112]	1040 [9]	0	0	15807 [513]	1109 [362]
<i>S. aureus</i>	1002	78 [40]	873 [282]	4412 [80]	740 [715]	1 [1]	15197 [1268]	911 [646]
<i>K. pneumoniae</i>	1063	7464 [248]	1612 [88]	7391 [97]	0	1410 [1410]	30947 [2772]	3525 [1652]
<i>A. baumannii</i>	300	500 [223]	161 [22]	1309 [50]	0	195 [195]	8378 [1051]	514 [173]
<i>P. aeruginosa</i>	359	2668 [112]	872 [87]	2520 [104]	0	254 [254]	5424 [285]	110 [54]
<i>Enterobacter spp.</i>	207	2007 [88]	133 [9]	1365 [35]	0	241 [241]	4192 [429]	552 [215]
<i>E. coli</i>	2,370	41689 [471]	2150 [37]	22694 [237]	0	1283 [1283]	109337 [3513]	5502 [1732]

<sup>a</sup> The number of AGR-carrying MGEs are shown in square brackets.

<sup>b</sup> The completely sequenced genomes of *ESKAPEE* bacteria were retrieved from GenBank in October 2021.

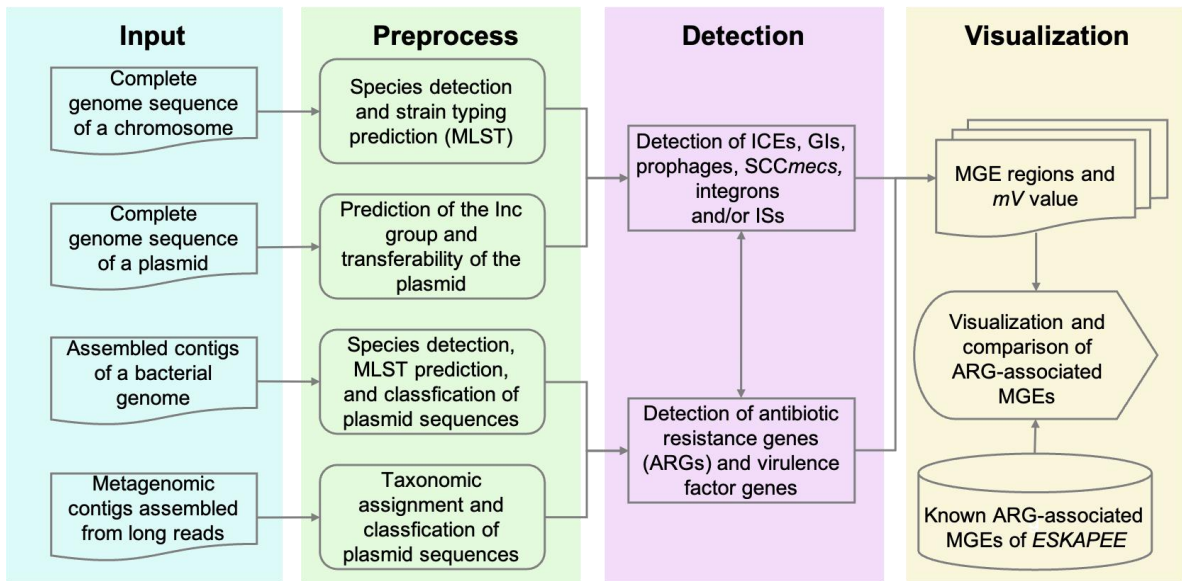
<sup>c</sup> The cluster of ISs was detected with an interval less than 5kb.



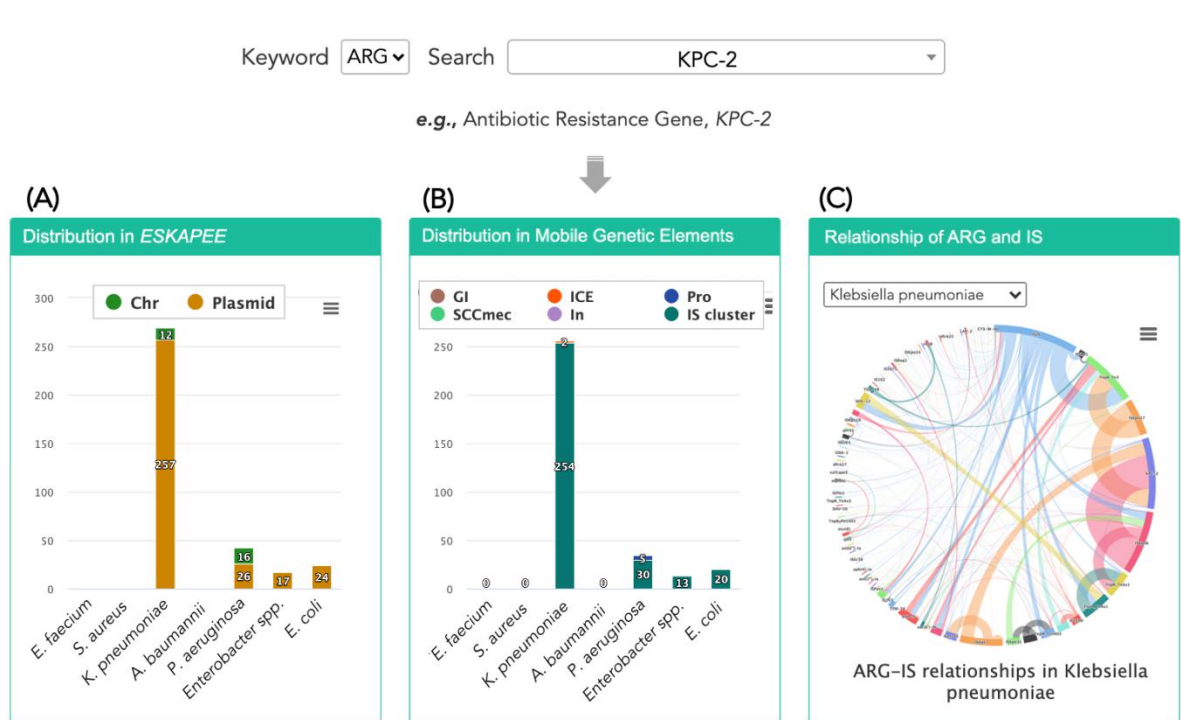
**Table S2.** Three MGE datasets collected by MobilomeDB2

Dataset	MGE type	MGE number	Data source
Dataset I (transferable MGEs)	Plasmid (conjugative)	165	Transferable MGE that was taken from experimental literature
	ICE	180	
	Transposon	241	
Dataset II (active ARG-MGEs of <i>ESKAPEE</i> ) <sup>a</sup>	Plasmid	732 [25]	VRprofile2-predicted ARG-carrying MGEs of <i>ESKAPEE</i> bacteria
	IS cluster	1,365 [24]	
	Integron	1,899 [20]	
	ICE	158 [13]	
	<i>SCCmec</i>	607 [11]	
	Genomic island	68 [10]	
	Prophage	23 [3]	
Dataset III (MGEs taken from public resources)	Plasmid	34,513	PLSDB
	ICE	552	ICEberg
	Prophage	65,668	PHASTER
	Genomic island (Pathogenicity and antimicrobial resistance islands)	1,329	PAIDB
	Transposon	407	TnRegistry

<sup>a</sup> The number of active MGE groups are shown in square brackets. A total of 15,650 ARG-carrying MGEs were identified in 5,536 completely sequenced genomes of *ESKAPEE* bacteria. Then they were pair-wise aligned using Mash (1) and then grouped using NetworkX with the Mash distances less than 0.005 (2). The distribution of these obtained ARG-carrying MGE groups among *ESKAPEE* was examined, and 106 groups were widespread among different MLST of the individual species. These groups were thus labeled as 'active'.



**Figure S1.** Schematic representation of the VRprofile2 pipeline to identify and display antibiotic resistance-related mobile genetic elements in the genome sequences of bacterial pathogens.



**Figure S2.** An overview of the ‘Search’ web page for the query of carbapenemase gene *KPC-2*. **(A)** The distribution of *KPC-2* in the chromosomes and plasmids of *ESKAPEE*. **(B)** The distribution of *KPC-2* on various types of MGEs. **(C)** The relationship between the IS elements and *KPC-2* of *K. pneumoniae*. These data were based on the VRprofile2 pre-calculation results of 5,536 completely sequenced *ESKAPEE* bacterial genome available in GenBank in October, 2021.



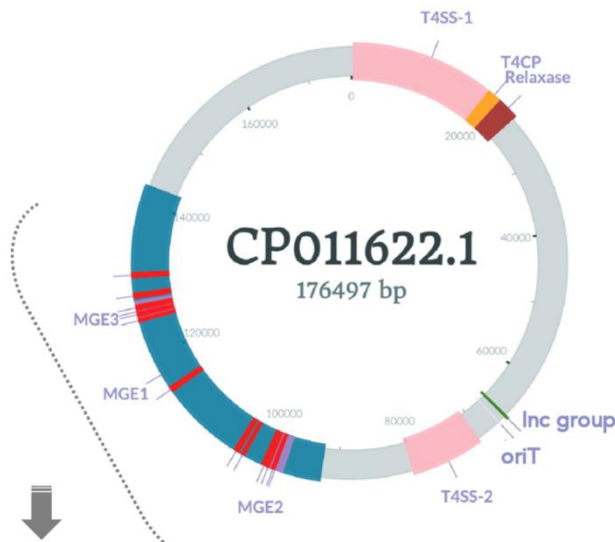
**Figure S3.** An overview of VRprofile2 outputs using the *E. coli* M505 chromosome as an example. **(A)** The predicted MLST of *E. coli* M505. **(B)** A table of the identified MGE regions. **(C)** A circular representation showing the locations of the identified ARG-carrying MGE1-3 regions. **(D)** An expanded view of the MGE1 region (a genomic island) harboring the MGE2 region (a composite transposon). MGE2 contained the ARGs (marked in red), IS elements (in yellow), and the MGE3 region (an integron).

(A) Submit Type: Plasmid Inc Group: IncA/C2 Download Results  
 Mobility: Conjugative [Mobile Genetic Elements](#) [ARGs](#)

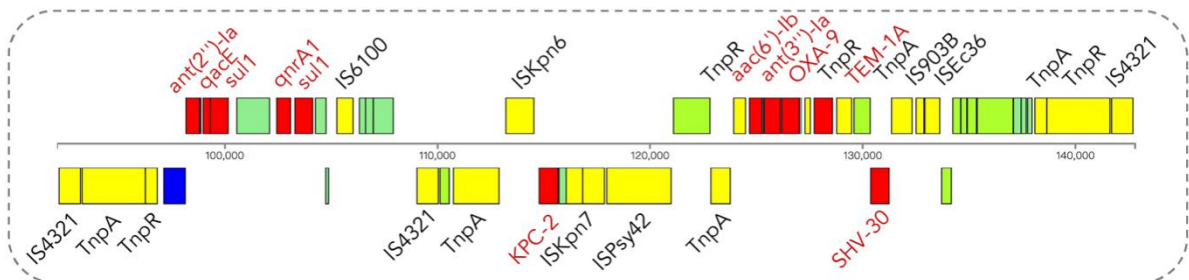
(B) Summary Genome View

MGE Type	MGE Detail	Cargo ARG	Drug Class	Virulence	Vir Detail	MGE Coords	Length	BestHit
Conjugative plasmid	-	ant(2'')-Ia / qacE / sul1 / qnrA1 / blaKPC-2 / aac(6)-Ib / ant(3'')-Ia / blaOXA-9 / blaTEM-1A / blaSHV-30	Aminoglycoside / Dis...	-	-	1.176498	176497	≡
IScluster/Tn	IS4321 / TnpA_TnAs3 / TnpR_TnAs2 / IS6100 / IS4321 / TnpA_Tn3 / ISKpn6 / ISKpn7 / ISKpn7 / ISPsy42 / TnpA_Tn3 / TnpR_Tn3 / TnpR_Tn3 / TnpA_Tn5403 / IS903B / ISEc36 / ISEc36 / TnpR_TnAs3 /	ant(2'')-Ia / qacE / sul1 / qnrA1 / blaKPC-2 / aac(6)-Ib / ant(3'')-Ia / blaOXA-9 / blaTEM-1A / blaSHV-30	Aminoglycoside / Dis...	-	-	92210..142702	50492	≡

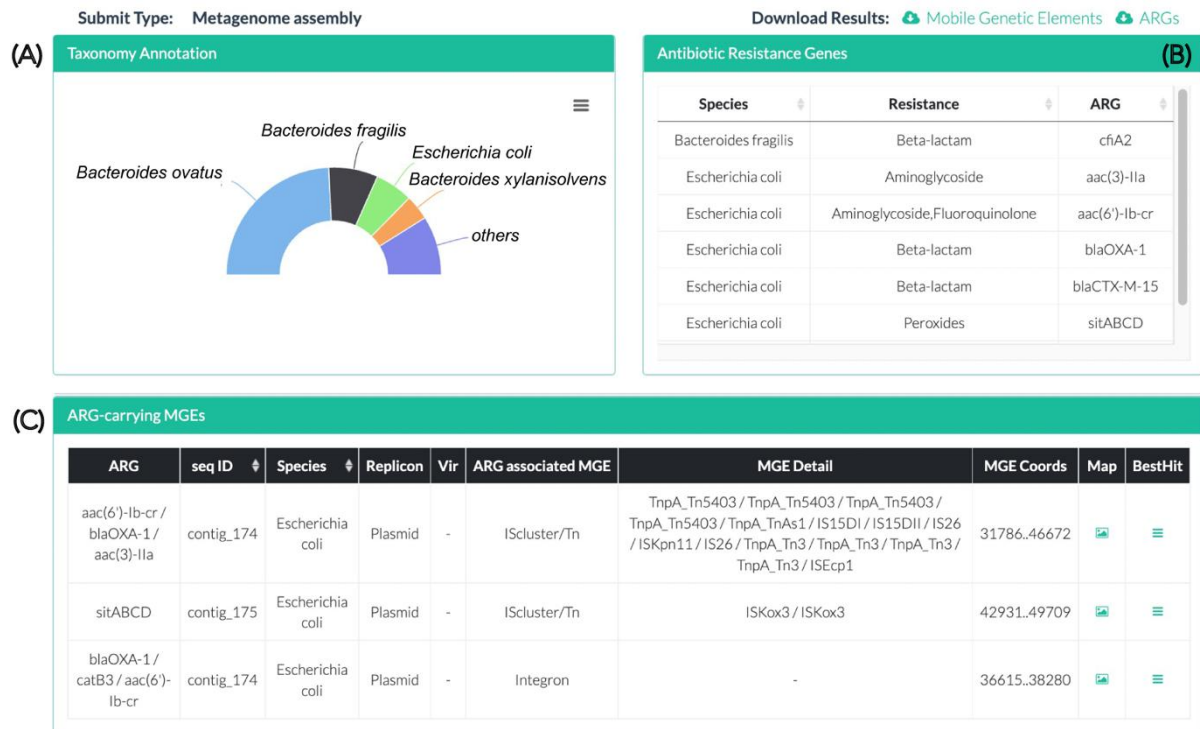
(C)



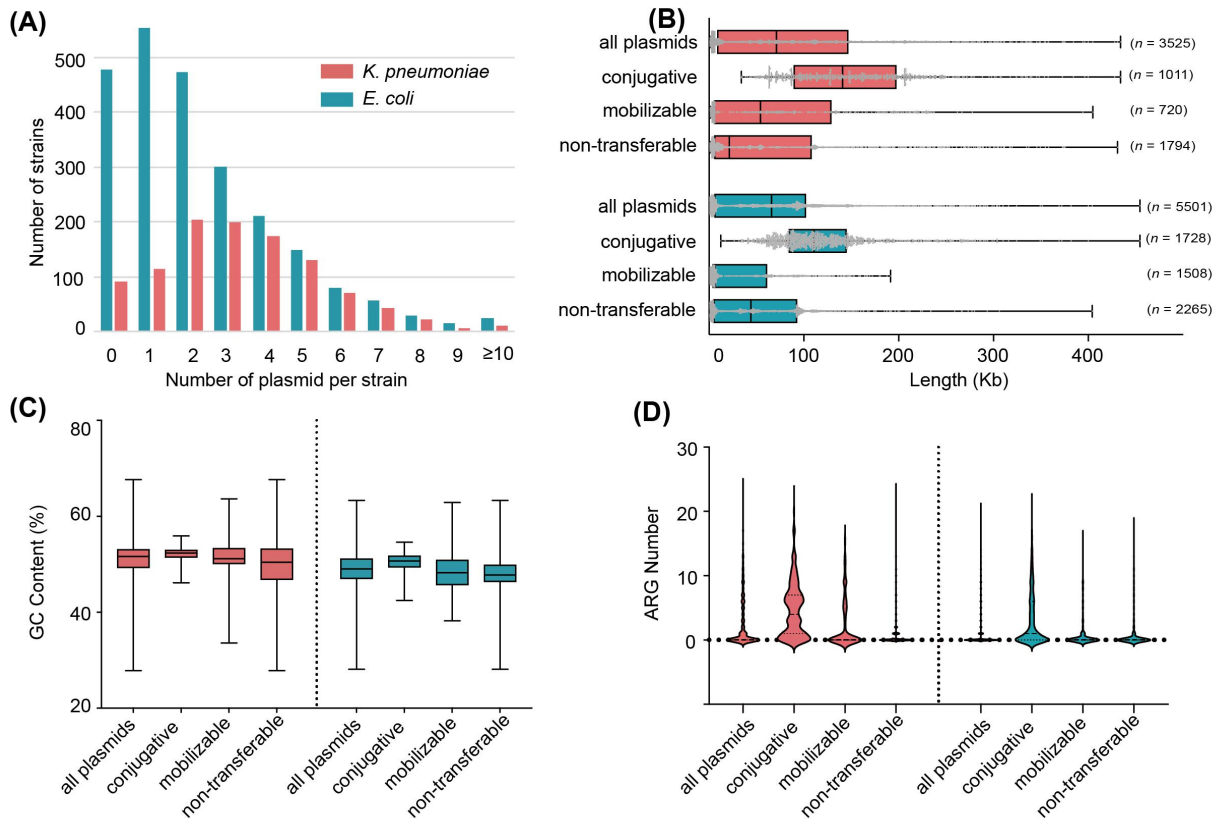
(D)



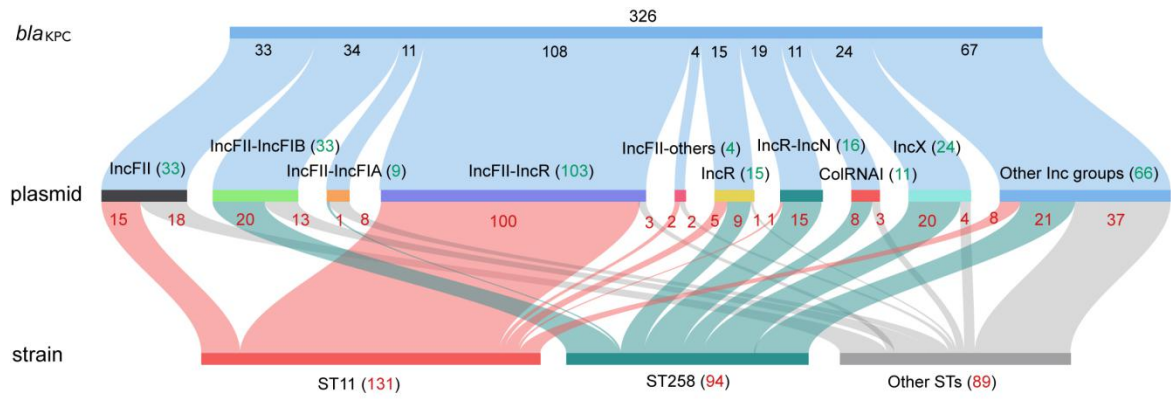
**Figure S4.** An overview of VRprofile2 outputs using the *K. pneumoniae* plasmid pKPC\_CAV1344 as an example of the VRprofile2-detected multidrug resistance region (MRR). The KPC-2-carrying MRR was reported by Christopher, *et al.* (3) (A) A table of the predicted incompatibility group and transferability of pKPC\_CAV1344. (B) The identified MGE regions. (C) A circular representation of the plasmid showing the locations of the identified ARI-A MRR (MGE1, filled with blue) and ARGs (highlighted in red). (D) An expanded view of the MGE1 region (MRR) contained the MGE2 region (an integron) and the MGE3 region (an integron).



**Figure S5.** An overview of VRprofile2 outputs using an example of the metagenomic contigs assembled from long-read sequencing data. The MinION sequencing gut metagenomic data (NCBI SRA: ERR3201935) was reported by Bertrand, *et al.* (4). **(A)** A doughnut chart displaying the species composition and relative abundance. **(B)** A table of the identified ARGs. **(C)** A table list of the identified ARGs, MGEs and strains.



**Figure S6.** VRprofile2-predicted ARGs and plasmid transferability with the input of plasmid genome sequences. The genome sequences of 3,525 plasmids of 1,063 completely sequenced *K. pneumoniae* and 5,502 plasmids of 2,370 completely sequenced *E. coli* were taken from GenBank in October, 2021. **(A)** The plasmid number of the individual *K. pneumoniae* or *E. coli* strains. **(B)** The size of the plasmids with different transferability. **(C)** The GC content of the plasmids with different transferability. **(D)** The number of the ARGs carrying the plasmids with different transferability.



**Figure S7.** The relationship of the *bla*<sub>KPC</sub> genes, plasmids, and strains of *K. pneumoniae*. The number of the plasmid-carrying *bla*<sub>KPC</sub> genes (marked in black), the number of the Inc groups of plasmids (in green), and the number of the sequence typing (ST) of strains (in red) were plotted. Notably, the ten and one plasmids carried two and three copies of *bla*<sub>KPC</sub>, irrespectively, and the *bla*<sub>KPC</sub> number for the corresponding plasmid was counted as 2 or 3. The “Other STs” contained nine ST307 strains, five ST512 strains, and the other thirty-nine STs with a strain number of less than five.



## REFERENCES

1. Ondov,B.D., Treangen,T.J., Melsted,P., Mallonee,A.B., Bergman,N.H., Koren,S. and Phillippy,A.M. (2016) Mash: fast genome and metagenome distance estimation using MinHash. *Genome Biol.*, **17**, 132.

<https://doi.org/10.1186/s13059-016-0997-x>

<http://www.ncbi.nlm.nih.gov/pubmed/27323842>

<https://www.ncbi.nlm.nih.gov/pmc/articles/PMC4915045>

2. Matlock,W., Chau,K.K., AbuOun,M., Stubberfield,E., Barker,L., Kavanagh,J., Pickford,H., Gilson,D., Smith,R.P., Gweon,H.S., *et al.* (2021) Genomic network analysis of environmental and livestock F-type plasmid populations. *ISME J.*, **15**, 2322–2335.

<https://doi.org/10.1038/s41396-021-00926-w>

<http://www.ncbi.nlm.nih.gov/pubmed/33649550>

<https://www.ncbi.nlm.nih.gov/pmc/articles/PMC8319146>

3. Harmer,C.J., Partridge,S.R. and Hall,R.M. (2016) pDGO100, a type 1 IncC plasmid from 1981 carrying ARI-A and a Tn1696-like transposon in a novel integrating element. *Plasmid*, **86**, 38–45.

<https://doi.org/10.1016/j.plasmid.2016.06.002>

<http://www.ncbi.nlm.nih.gov/pubmed/27318267>

4. Bertrand,D., Shaw,J., Kalathiyappan,M., Ng,A.H.Q., Kumar,M.S., Li,C., Dvornicic,M., Soldo,J.P., Koh,J.Y., Tong,C., *et al.* (2019) Hybrid metagenomic assembly enables high-resolution analysis of resistance determinants and mobile elements in human microbiomes. *Nat. Biotechnol.*, **37**, 937–944.

<https://doi.org/10.1038/s41587-019-0191-2>

<http://www.ncbi.nlm.nih.gov/pubmed/31359005>